

FEATURES

- High temperature model and normal temperature model optional
- Adopt ASIC digital compensation technology
- Excellent anti-corrosion and anti-wear properties
- Strong anti-interference, good long-term stability
- 50.5mm chuck connection, easy to install and clean
- The part in contact with the measured object is made of 316L material, which is suitable for medical and sanitation industries.



DESCRIPTION

LFT2020 Sanitary Flat Membrane Pressure Transmitter adopts high-performance oil-filled diffusion silicon core. The internal special-purpose integrated circuit converts the millivolt signal of the sensor into standard voltage current or 485 signal, which can be directly connected with computer interface card, control instrument, intelligent instrument or PLC. The process connection of the pressure transmitter is sealed by sterile chuck type diaphragm, which is widely applied in the food, dairy, chemical and pharmaceutical industries.

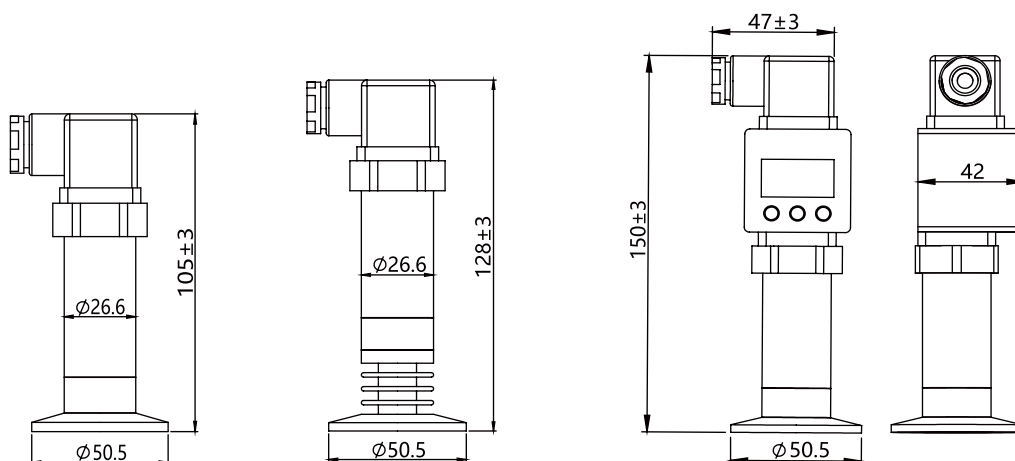
SPECIFICATION

Measurement Range	-100kPa...0~10kPa...6MPa			
Overload Pressure	1.5 times of the rated pressure			
Accuracy①	±0.5%F.S			
Stability	<0.5%F.S/year			
Working Temp	-20~85°C			
Medium Temp②	-40°C~100°C/-40°C~150°C			
Measure Medium	Media Compatible with 316L Stainless Steel, Selected Rubber Rings			
Sanitary Flat Membrane Pressure Transmitter				
Electrical Properties	2-wired	3-wired	3-wired	4-wired
Output Signal	4~20mA	0.5~4.5V	0~10V	RS485
Power Supply	8~36VDC	4.75~5.25VDC	12~36VDC	10~30VDC
Electrical Connection	DIN43650A (Big Hirschmannn),M12 waterproof outlet, M12 aviation connector(four cores), GX12 aviation connector (three/four cores)			
Explosion-proof Digital Display Sanitary Flat Membrane Pressure Transmitter				
Electrical Properties	2-wired	3-wired	4-wired	
Output Signal	4~20mA	0~10V	RS485	
Power Supply	10~36VDC	12~36VDC	10~36VDC	
Electrical Connection	M20 waterproof outlet			
Enclosure Protection	IP54(GX12 aviation connector),IP65(DIN43650A,M12 waterproof outlet, M20waterproof outlet,M12 four-core aviation connector)			
Pressure Connection	50.5mm chuck connection			
Pressure Form	Gauge Pressure G/Absolute Pressure A			
Certification	ROHS , EU electrical safety standard CE			

① Measured at 25°C, including the comprehensive accuracy of linearity, repeatability and hysteresis

② Without heat sink is -40~100°C, with heat sink is -40~150°C

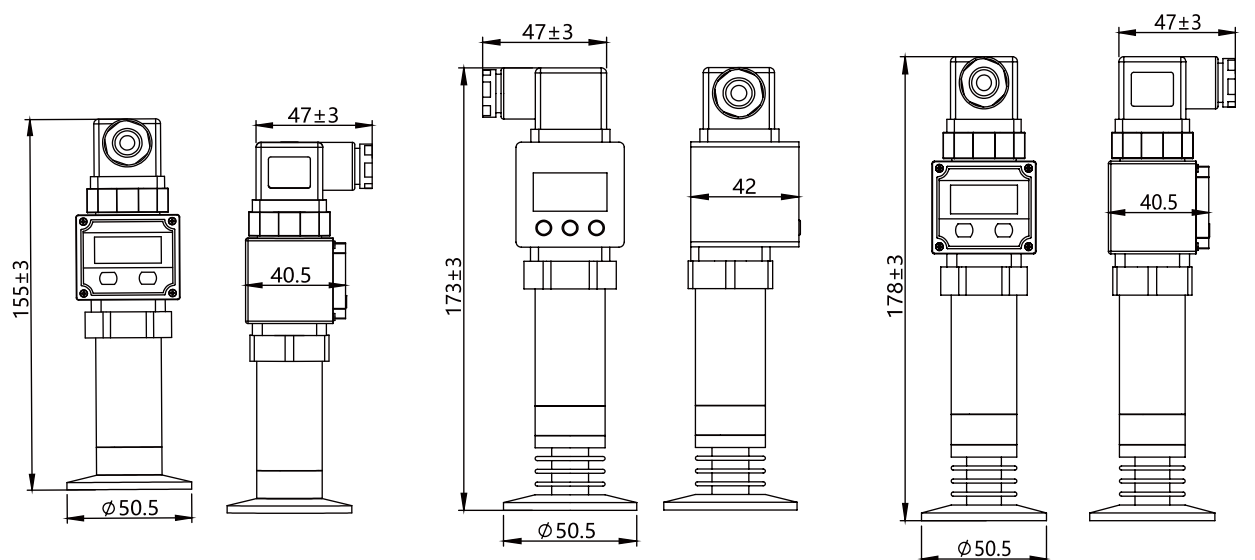
DIMENSION(mm)



Hirschmann Connector

High Temperature Mode
Hirschmann Connector

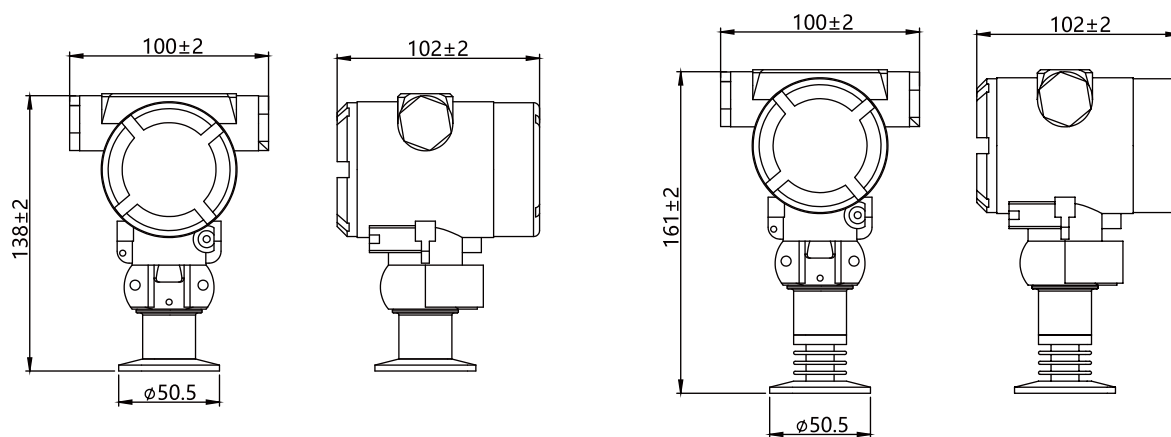
Digital Display Model RS485 Output



Digital Display Model
Current/Voltage Output

High Temperature Resistant Digital
Display Model RS485 Output

High Temperature Resistant Digital
Display Model Current/Voltage Output



Explosion-proof
Digital Display Model

High Temperature Resistant Explosion-proof
Digital Display Model

ORDER REF NO.

Code and description										Remark			
LFT2020										Model			
	Range	-100kPa...0~10kPa...6MPa								Measurement Range			
		K	K = kPa					P	P = psi		Measurement Unit		
		B	B = Bar					M	M = MPa				
			A4	A4= 4~20mA(2-wired)							Output Mode		
			V05	V05= 0.5~4.5V(3-wired)									
			V0	V0= 0~5V(3-wired)									
			V10	V10= 0~10V(3-wired)									
			RS	RS= RS-485 output (4-wired)									
				0.5	0.5 = 0.5%F.S					Accuracy			
				1.0	1.0 = 1.0%F.S								
					D1	D1 = DIN43650A(Big Hirschmann)					Electrical Connection		
					M	M = M12(waterproof outlet)							
					C3	C3=GX12 Three-core aviation connector							
					C4	C4=GX12 Four-core aviation connector							
					H	H=M12 Four-core aviation connector							
					M20	M20 waterproof cable outlet (Explosion-Proof digital display)							
						K2	K2=50.5mm chuck connection				Pressure Connection		
							N	Without display(General type)			Digital Display Mode		
							D1	General type digital display③					
							D2	Explosion-proof digital display					
								1.0	1.0 = 1m		Cable Length		
								2.0	2.0 = 2m				
LFT2020	0-10	B	A4	1.0	D1	K2	N	1.0				Selection Example	

③When the selected type is conventional digital display sanitary flat film pressure transmitter, the cable outlet is only the big Hirschmann connector, and the power supply voltage is all 12~30VDC